

QLaser Solutions

March 2009

The future belongs to the competent. It belongs to those who are very, very good at what they do.

QLaser System Receives FDA OTC Approval For Osteoarthritis of the Hand!

We are proud to announce that the *QLaser Half System Red* (Q1000 & 660 Enhancer) has recently received FDA Over-the-Counter approval for treatment of Osteoarthritis of the Hand.

The approval was based on a double-blind, clinical study that provided the live laser group with massively positive results ...

Summarized Study Results	Live Laser	Fake Laser
Number of Patients	46	45
# with 30% or more decrease in hand pain at 10 days	40 of 46 ... 86.96%	19 of 45 ... 42.22%
Average percentage drop in pain after 10 days	62%	26%
# of times pain relief medicine taken during 10 days	3.6	7.3
# of hand joints showing noticeable improvement	15 of 19 ... 78.94%	2 of 19 ... 10.53%
Patients "somewhat" or "very" satisfied at day 10	35 of 43 ... 81.39%	11 of 43 ... 25.58%
Patients "somewhat" or "very" satisfied at day 42	28 of 34 ... 82.35%	8 of 29 ... 27.59%

You already own a QLaser (if you don't have the 660 Enhancer, and want one, please call!) - what does this mean to you? Several things actually ...

It proves how intelligent you were when you made your initial QLaser investment! :)

If you haven't been able to convince your family and friends that your **QLaser** is scientifically proven, you now have the ammunition to do so ... and, I'm betting that when you do get back to them with this new information, you'll be the recipient of several sizable referral checks!

Here's a couple of action steps that will be in your best interest ...

1. Email me (kip@rapidnet.com) the names and email addresses of five of your friends, family or professional colleagues you'd like to give a little "I told you so" to. **When I receive those five names and email addresses from you, I'll send you a free PDF copy of Dr. Lytle's new book *Universal Healer, Osteoarthritis* - an \$18 value!**

2. I'll send each of the five a NICE email notifying them on your behalf the scientific proof that **QLaser** works ... and will also give them the opportunity to visit my website and obtain a free copy of *Universal Healer, Osteoarthritis*.

3. Their names will be added to our database with you as the referring source (as long as they haven't already been referred by someone else) ... and when they purchase their own **QLaser**, you'll receive a referral fee equal to 10% of their purchase price!

Email me those five names and email addresses today (kip@rapidnet.com). That way, you'll be reading your free copy of *Universal Healer, Osteoarthritis* tomorrow ... and will be well on your way to some new found referral fee cash!

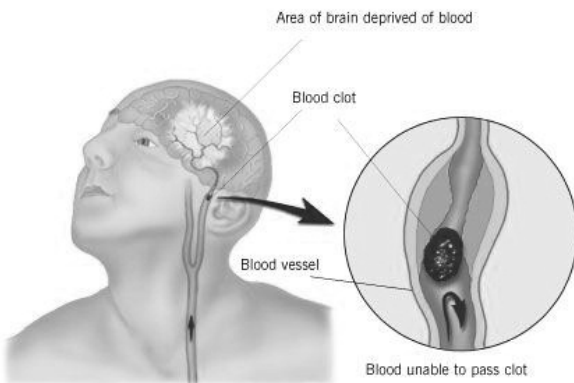
Thanks for your support! Kip

Email or Paper? Your votes came in and paper is the winner ... 64.28% to 35.71% Thanks to everyone who voted!

Laser Training with Dr. Larry Lytle

Note: the opinions and ideas presented in the "Laser Training with Dr. Larry Lytle" section of this newsletter are those of Dr. Lytle only. No medical treatment claims are made or implied by the manufacturer of this laser equipment, Business Wizards, Inc., QLaser Solutions, nor any distributor associated with this equipment. This equipment is sold and intended for veterinary use.

Blood Clots/Stroke - They Now Have a Fourth Indicator, the Tongue



I have consistently said – if the jaw is jammed up and back it reduces blood flow to the brain. While the signals are simple to recognize the cause as demonstrated by the crooked tongue may well be tightening of the 68 pair of muscles that control the jaw relationship to the skull.

RECOGNIZING A STROKE

Sometimes symptoms of a stroke are difficult to identify. Unfortunately, the lack of awareness spells disaster. The stroke victim may suffer severe brain damage when people nearby fail to recognize the symptoms of a stroke. Now doctors say a bystander can recognize a stroke by asking three simple questions:

S *Ask the individual to SMILE.

T *Ask the person to TALK and SPEAK A SIMPLE SENTENCE (Coherently) (i.e. It is sunny out today)

R *Ask him or her to RAISE BOTH ARMS.

If he or she has trouble with ANY ONE of these

tasks, call emergency number immediately and describe the symptoms to the dispatcher.

New Sign of a Stroke ----- Stick out Your Tongue. Ask the person to 'stick' out his tongue.. If the tongue is 'crooked', if it goes to one side or the other, that is also an indication of a stroke.

If any of these symptoms appear, call an emergency dispatcher, and immediately apply Mode 2 of your Q1000 directly to the side of the head where the stroke occurred.

Do you have any clinical experience in using lasers to help avoid root canals and/or extractions when a tooth's nerve/pulp has become infected due to decay or tooth damage? The traditional view held by dentists and endodontists is that once a tooth pulp has been infected, then the only solution to save the tooth is by a pulpectomy/root-canal. As you're probably aware of the root-canal controversy, I was wondering whether some type of low-level laser/cold laser could be directed at the site of a pulp infection, in order to A) penetrate the tooth enamel to the inner tooth pulp B) disinfect the pulp and kill the bacterial infection and C) Increase circulation and healthy cell vitality of the tooth pulp, thus increasing the possibility of avoiding a root-canal in cases that would normally require one.

It depends on the degree of damage. If the tooth is inflamed and still sensitive to hot and cold, the QLaser System can reverse that condition – especially when combined with Miracle Bite Tabs (MBTs). If the nerve and blood vessels in the tooth are already dead and the pulp chamber is full of infection (pus), the QLaser System will ease the pain but the tooth will need a root canal. The QLaser System is a good way to counteract the negative effects of a root canal and should be used when doing all root canals – just before and after the root canal filling. Damaged teeth die in stages. The problem starts with sensitive teeth most often caused by occlusal trauma and secondarily by recurrent decay. The longer this exists the more hyperemic a tooth becomes and creates a lot of pain. Many teeth are either extracted or receive root canals at this stage which can be avoided by applying the QLaser System and relieving the occlusal trauma with MBTs or some other acceptable dental splint. I am aware of the root canal

controversy but disagree with extracting teeth that can be saved with root canals. The Q Laser will flush the bacteria out of the dentinal tubules back into the blood system where the natural defense system will handle them. I have two root canals and would not have them extracted for any amount of money because I know that loss of posterior support will alter the balance in the Autonomic Nervous System.

I've been experiencing hair loss for over 20 years and have been diagnosed with androgenic alopecia. I have experienced laser treatment for this condition for 30 minute intervals, 3-4 days/wk than decreased eventually to 1 day per wk for a period of 2 months, in all I have had a total of 4 months of treatments and have not experienced much change, but wonder if your laser product could be more effective. To continue with the above laser program is a very costly venture but again, I wonder if affording your laser would be more cost effective in the long term. Let me know what success testimonies you have with your laser product in the treatment of Androgenic Alopecia and also what the cost would be for such an investment. P.S. It's no fun experiencing ongoing hair loss when your female.

The Q Laser System is not specifically designed to just treat hair loss but works at the cell level for many other health concerns that can affect hair loss. Hair loss in general and Androgenic Alopecia is related to reduced blood flow to the head. When you do not have adequate blood flow to the head many bad things can happen including problems with the eyes and ears and memory. One study even shows that alopecia has a relationship to some types of heart problems. The Q1000 laser system works very well by itself and even better in conjunction with Miracle Bite Tabs to restore blood flow to the brain and head. Alopecia can also be caused by improper protein metabolism and since the Q1000 and MBT work to restore proper digestion, benefits can be achieved using the Q Laser system in this way.

Do you have any research on pulmonary Hypertension or Bi-polar disorder?

Following is a definition of pulmonary hypertension: *Pulmonary hypertension (PH) is*

increased pressure in the pulmonary arteries, which carry blood from your heart to your lungs to pick up oxygen. This increased pressure can be due to the arteries tightening, the walls of the arteries becoming stiff, or blood clots forming in the arteries. These changes make it hard for the heart to push blood through the arteries and into the lungs. Thus, the pressure in the arteries rises. Also, as a result of the heart working harder, the right ventricle of the heart becomes strained and weak.

A contributing factor is an imbalance in the Sympathetic and parasympathetic divisions of the Autonomic Nervous System which are directly affected by faulty proprioception from the oral cavity to the brain. Place Miracle Bite Tabs and keep them adjusted daily as needed. Since the smooth muscles in artery walls release quickly when the Q 1000 is used - Apply mode 3 of the Q1000 for one cycle over each lung every other day. On alternate days apply mode 2 over the heart for one cycle.

Bipolar is a disorder, sometimes called manic depression and associated with severe mood swings - periods of overly high moods (manic episodes) or low moods (depressive episodes). Bipolar disorders can worsen with those who have faulty proprioceptive feedback to the brain from the oral cavity which reduces blood flow to the brain. Stimulants such as alcohol, smoking, and sugar and intolerant foods all make Bipolar disorders worse. Place Miracle Bite Tabs, detoxify with Belly Gelly. For overly high moods apply mode 1 of the Q1000 to proprioceptive points 1 - 4 as shown on pages 6 - 8 in your Low Level Laser User's Manual and then apply mode 2 of the Q1000 for one cycle to each temple as needed for manic episodes. For depression moods apply mode 1 of the Q1000 to proprioceptive points 1 - 4 as shown on pages 6 - 8 in your Low Level Laser User's Manual and then apply the alert mode which must be specially programmed into the Q1000 for one cycle to each temple as needed for depressive episodes. Both manic and depressive episodes respond very well to the breathing rhythms as directed in chapter 10 of Energy Transcendence. Most people that are Bipolar are also quite toxic, therefore I suggest using Belly Gelly and Gene Flora as directed in the appendix of your Low Level Laser User's Manual

New Testimonials

Kip..... We have a Q1000...606 and 808 and love what they do for us. Jack & Rosalie Dale, Radnor, PA

Hi Veronica just wanted to let you know, I am feeling great tonight, especially in my back area where I had a LOT of inflammation. I am surprised it took so much out so fast. Danielle

You are a blessing to do business with! Sue Hollingsworth

I must say that I truly can't imagine my life and my practice without the Q1000 and the 808 Enhancer though (the 660 comes in handy too!) Dr. Todd Austin, Virden, IL

There is no way I could live without my Q1000 - I'm blessed that our paths have crossed. Sincerely, Patti McGoon

Good Morning Dr David, Char has been demonstrating on a friend that had a stroke 2 years ago, resulting in "claw hand" and has been using the Q1000 directly on the stroke area. She seen a distinct change in the claw hand this morning after 1 treatment yesterday. It was easily opened and remained open when laid on a flat surface. Before it was opened only one finger at a time and would return to the claw as soon as pressure was released. Thanks for the wonderful support and training! John and Char

Thus far I have used the laser with listed results: A general feeling of calmness in knowing I can finally get relief from medical symptoms. I have enjoyed having my cataract problem greatly diminish and now I can see the tops of the snow-covered mountains with perfect clarity. Prior to QLaser treatment the mountains were slightly blurry. My body pain in my head, neck, back and lower back is greatly diminished. My fibromyalgia/peripheral neuropathy is better with a pain reduction from level 8 to about a level 3 now. Gerald and Sue Hubbard

I already own a Q Laser System, and after experiencing what it is capable of, my friend bought a system as well. She shared her system with her parents but after a while the one system could not

satisfy the two families so they bought another system! The QLaser is an awesome product; we would not be without it. It works! Carlos Mendoza

I want you to know that the Q1000 is for the birds! Recently I caught a house finch that was sitting at the bird feeder. It had two severely infected eyes. One eye was completely swollen shut. The other eye was almost swollen shut. I used Mode 1 of my Q1000 for one cycle over each eye. Within 4 hours, the eyes were 80% better, and continued to improve rapidly. I kept the bird and lasered the eyes one more time on the 3rd day. I did this for good measure before I let the bird go. The eyes looked completely healed – what a thrill! Ruth Sawall, Fremont, WI

November 5, 2008, David had abdominal surgery related to pancreatic cancer. After surgery, David developed +4 pitting edema in his lower extremities bilaterally. The pressure and discomfort were unbearable. Wearing shoes, socks, and pulling pants over his thighs caused excruciating pain. After seven weeks of protein therapy to attempt to pull the fluid back into the bloodstream and diuretics to flush the fluid from the body, the edema remained unchanged. Lymphatic drainage therapy and lymphatic wraps were used with minimal and only partial relief, and edema returned the next morning. Then Q1000 Laser therapy was initiated. Two units were used while David lay on the floor with his legs elevated. Laser light therapy began on the feet and progressed downward to the groin area. It consisted of alternating nine minutes on Setting 1 (pain/inflammation), nine minutes on Setting 5 (lymphatic), and nine minutes on Setting 3 (stimulation). During the first treatment, the edema was partially resolved, but the real difference occurred when the Q1000 was used on the scrotum. During the first three-minute session to the scrotum on Setting 3, David had to immediately urinate. The second night the same sequence and therapy was done. Again, when Setting 3 was applied to the scrotum, urination was immediately initiated. After three days of this treatment, the edema in his legs subsided. After five treatments, the edema was basically gone and has continued to remain under control. Cindy C / oncology nurse / Florida & Texas